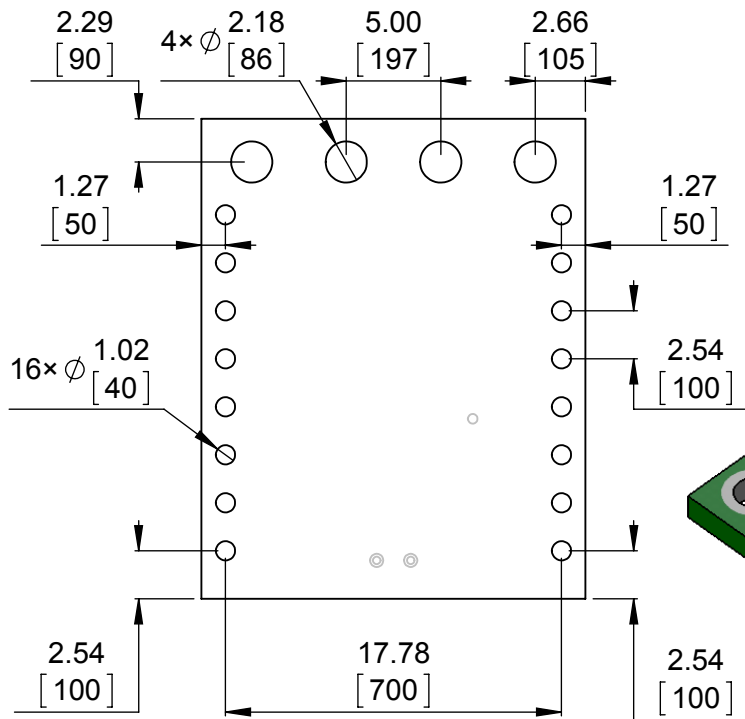
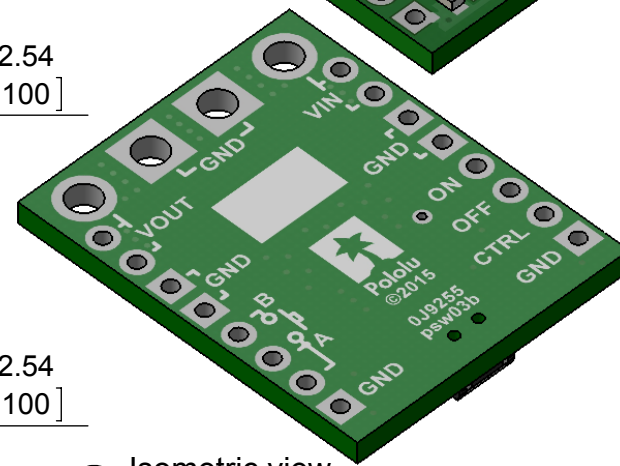
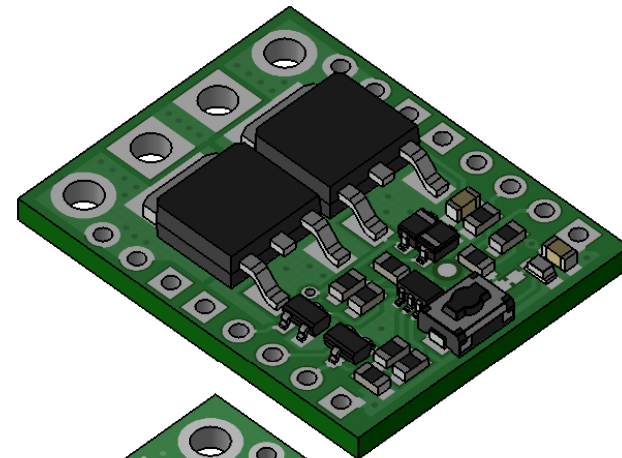


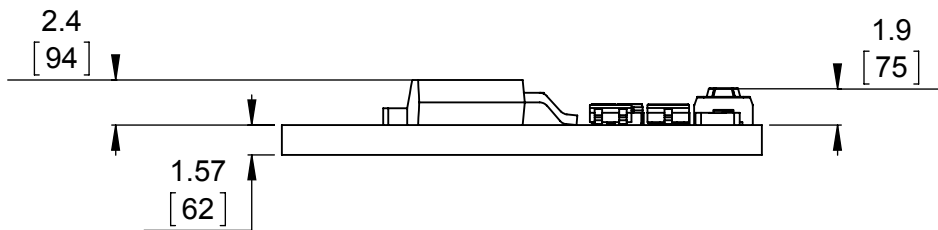
1 Board dimensions (top view)
Scale 5:2



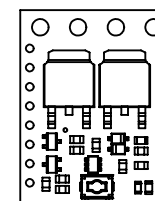
2 Connector callouts (bottom view)
Scale 5:2



3 Isometric view
Scale 5:2




4 Profile
Scale 5:2



5 Actual size
Scale 1:1

1. To get the specified scale, select 100% in print settings.
2. Drill location tolerance: ± 0.1 [± 5].
3. Board edge tolerance: ± 0.3 [± 10].

https://www.pololu.com/product/2812	
Name: Big Pushbutton Power Switch with Reverse Voltage Protection	Item numbers: 2812, 2813
Drawing date: 12 January 2016	
Units: mm [mil]	PCB dev code: psw03b
 © 2016 Pololu Corporation	